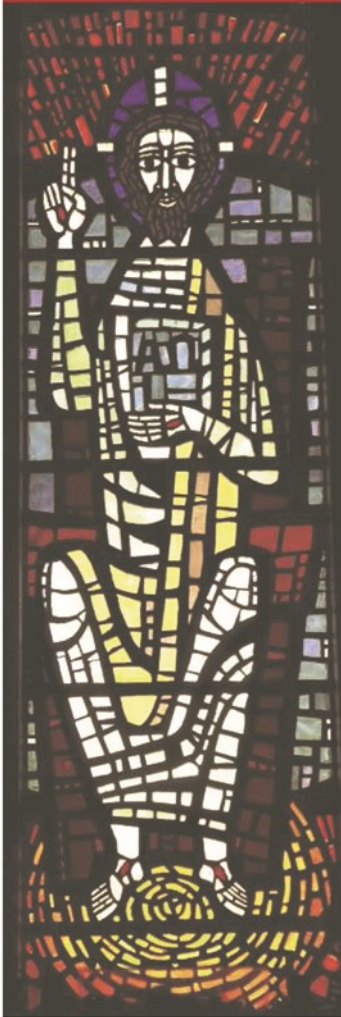


St. Paul  
Catholic  
Newman  
Center



1572 East Barstow Avenue  
Fresno, Ca 93710  
Office 559.436.3434  
csufnewman.com

## Third Sunday of Lent, Year B

March 7, 2021

Readings: Ex 20: 1-17; 1 Cor 1:22-25; Jn 2: 13-25

### The Deacon's Speakin'

*Dear Sisters and Brothers,*

*Today we leave the Gospel of Mark and enter into the Gospel of John for the next few weeks. The temple is the focus of this week's Gospel. While Matthew, Mark, and Luke place Jesus' cleansing of the temple immediately after His Palm Sunday entrance into Jerusalem, John places the event early in His gospel, following Jesus' first miracle at Cana. The Synoptic Gospels (Matthew, Mark, and Luke) recount only one journey into Jerusalem, but in John's Gospel Jesus makes several trips to the holy city.*

*Pilgrims were expected to make a donation for the upkeep of the temple. Because Roman currency was considered "unclean", Jewish visitors had to change their money into Jewish currency in order to make their temple donation. Money changers, whose tables lined the outer courts of the temple, charged exorbitant fees. Visitors who wished to have a sacrifice offered on the temple altar would sometimes have to pay fifteen to twenty times the market rate for animals purchased inside the temple. Vendors could count on the cooperation of the official temple "inspectors" to, of course, reject as "unclean" or "imperfect" animals brought in from the outside.*

*Jesus' angry toppling of the vendors' booths and tables is a condemnation and exploitation of the faithful in the name of God. God's temple should be a house of prayer and Jesus, with authority and power, drives out the evildoers. This can be a jarring image of our Lord, when we're more accustomed to images like a watchful shepherd, a prince of peace, or a loving teacher and friend. It's helpful at times to approach God in a simple uncomplicated way. It's good, of course, to have a sense of awe and respect and wonder in the presence of the Lord – and the building itself, the house of God – but only to a certain point. If we only ever see God as Creator, Almighty, and Powerful Master – but never as a parent, brother, or friend – then we limit who God is, ignoring much of who God has revealed to us in the person of Jesus Christ.*

*Part of the revelation is revealed to us in Jesus, fully God and fully human. Sometimes we consider Him as only one of these at the expense of the other. It's important that we see Jesus as both divine and human at the same time. The Holy Spirit proceeds, we believe, from the Father and Son and permeates all of creation if we see the universe through eyes of faith. Can you see God in everything? How and when and where are we aware of God present in our midst? Are we aware, as best as we can be, of who God is in each moment in our lives?*

*Peace and love,*

*Deacon John*

### Mission Statement

Gifted by God, called by Christ, empowered by the Holy Spirit, St. Paul Catholic Newman Center is a parish committed to serving the academic community and all those who choose to be part of our parish family. We dedicate ourselves to bringing the transformative power of Christ to the world through word and action.



# Campus Ministry News!



## College Night

Join us this Wednesday for our Student Night. Visit our webpage or social media bio for the link!

---

## Young Adult Mass

Every Sunday, we host a Young Adult Mass at 7:00pm. This is an opportunity for students, young adults, and young professionals to come together and be among others our age giving thanks to God.

Join us before Mass at 6:00pm for confessions or adoration followed by Mass at 7:00pm.

## YOUNG ADULT MASS CALENDAR

March 7	6:00pm— Adoration	7:00pm— Young Adult Mass
March 14	6:00pm— Confessions	7:00pm— Young Adult Mass

---

## **Donations**

Thank you to all who have continued to donate snacks, school supplies, and household items. We make all of these items available to students every Sunday evening at our Young Adult Mass. The need is still there to help students save a little money by offering these items for free. If you could donate any of these resources please reach out.

## **Campus Ministry Contacts**

Edgar Guzman, Director: [edgar@csufnewman.com](mailto:edgar@csufnewman.com)

Fr. Byron Macias, Chaplain: [frbyron@csufnewman.com](mailto:frbyron@csufnewman.com)

## Faith, Family & Friends

Faith, Family & Friends is our parish religious education and faith formation program for EVERYONE - Single adults, couples, and families!



During this time when we are unable to meet together in large groups, we invite those of you who wish to receive Religious Education & Faith Formation resources for adults and / or children to register.

**Adults:** Register for our FF&F Adult Religious Education series by emailing John Prandini, Director of Ministries, at [prandinij@csufnewman.com](mailto:prandinij@csufnewman.com) with your name, primary email address, and cell phone number. You will then be placed on the list to receive these free resources.

**Recommendation:** All families with children join the Joy of Love Moms - Family Ministry led by Jakki Pucheu. Joy of Love Moms is sending out weekly emails that provide great ideas and information on fun faith formation activities for children and parenting suggestions to help you reduce stress and improve family communication. You can sign up by sending an email to [joyoflovemoms@gmail.com](mailto:joyoflovemoms@gmail.com) requesting to be put on their email mail list.

For additional information contact

Adults: John Prandini, MA at [prandinij@csufnewman.com](mailto:prandinij@csufnewman.com)  
Children: Sr. Kathleen Drilling at [skd@csufnewman.com](mailto:skd@csufnewman.com)

## Parish Lenten Reconciliation Service

As we live out our Lent this year, we will hold a special Reconciliation Service this year. Frs. Paul and Byron will hold Confessions on March 23, 24 and 25 from 2:00pm to 6:00pm at our regular Confession site (outside the Cafeteria on the patio).

To help you prepare an examination of conscience, we will post a video reflection/examination on our parish website and social media. You do not need to make reservations.

Please take advantage of this wonderful opportunity to do a good spring cleaning of the heart! Also, please help us spread the word. Please contact Fr. Byron for more information by emailing [frbyron@csufnewman.com](mailto:frbyron@csufnewman.com).

## High School Youth Group is Here!

Fr. Byron is beginning a Claretian High School Youth Ministry ages 14-18. We will meet the third Tuesday of the month (March 16, April 20, and May 18) at 6:00pm. Students will enjoy activities and celebrate Mass with Fr. Byron. In order to ensure we have supplies for everyone, please register your high school student (current eighth graders are welcome to begin attending now). [Claretian High School Youth Group Registration](#)

## Family Life Ministry

**FF&F Adult Religious Education and Faith Formation Ministry** will send adult religious education and faith formation videos and resources to adults wishing to receive them. If you wish to be on the list of recipients, register for our FF&F Adult Religious Education Series by emailing John Prandini at [prandinij@csufnewman.com](mailto:prandinij@csufnewman.com) with your primary email address and cell phone contact number. You will be placed on the list to receive these free resources. **You can also register by texting the message: SPCNC to 84576** and following the prompts you receive.

**The Ignatian Spirituality Group** has begun a weekly online Ignatian Spirituality Retreat for Everyday Life. Weekly Zoom meetings are held for those wishing to be included. Email John Prandini at [prandinij@csufnewman.com](mailto:prandinij@csufnewman.com) for details on how to enroll and participate.

**The Joy of Love Moms' Group** is a family ministry led by moms. To join Joy of Love Moms email Jakki at [joyoflovemoms@gmail.com](mailto:joyoflovemoms@gmail.com).

### Men's Scripture Study Group

If you'd like to receive weekly emails please send an email to John Prandini at [prandinij@csufnewman.com](mailto:prandinij@csufnewman.com) to enroll.

### Meditation Opportunities

**Christian Meditation** If you'd like to receive weekly emails from our Newman Center's Christian Meditation Group, member of the World Community of Christian Meditation, email [christianmeditation@csufnewman.com](mailto:christianmeditation@csufnewman.com). The group is facilitated by Benita Lankford.

## Volunteers Needed

We need volunteers to help us with the following positions for the Saturday 5:00pm Mass and Sunday 7:30am Mass: a bathroom monitor and ushers. We also need ushers at the Sunday 11:30am Mass. If you are able to help, please contact Jenna at [jenna@csufnewman.com](mailto:jenna@csufnewman.com).

## Second Collection Next Weekend

Next week, our parish will take up The Catholic Relief Services Collection (CRSC). Funds from this collection help provide food to the hungry, support to displaced refugees, and bring Christ's love and mercy to all people here at home and abroad. Next week, please give generously to the CRSC, and help Jesus in disguise. Learn more about the collection at [www.usccb.org/catholic-relief](http://www.usccb.org/catholic-relief).

# Weekly Calendar

<b>Sunday, March 7</b>	<b>Ex 20: 1-17; 1 Cor 1:22-25; Jn 2: 13-25</b>
9:30am Mass for Reynaldo Benitez	Chapel Courtyard
10:00am HS Confirmation Class	Zoom
11:30am Mass for Allan Kennedy	Chapel Courtyard
<b>Monday, March 8</b>	<b>2 Kgs 5: 1-15ab; Lk 4: 24-30</b>
8:00am Mass for Betty Sandoval	Chapel / Facebook
6:00pm Young Adult Bible Study	Google Meet
<b>Tuesday, March 9</b>	<b>Dn 3: 25, 34-43; Mt 18: 21-35</b>
6:00pm Mass	Chapel / Facebook
<b>Wednesday, March 10</b>	<b>Dt 4: 1, 5-9; Mt 5: 17-19</b>
8:00am Mass	Chapel
6:00pm College Night	Zoom
<b>Thursday, March 11</b>	<b>Jer 7: 23-28; Lk 11:14-23</b>
5:00pm Confessions	East Patio
6:00pm Mass	Chapel
<b>Friday, March 12</b>	<b>Hos 14: 2-10; Mk 12: 28-34</b>
8:00am Mass for Al Mendoza	Chapel
3:30pm Food Distribution	East Parking Lot
6:00pm Stations of the Cross	Chapel / Facebook
<b>Saturday, March 13</b>	<b>Hos 6: 1-6; Lk 18:9-14</b>
5:00pm Mass for Eugene Tautimes	Chapel
<b>Sunday, March 14</b>	<b>1 Sm 16: 1b; 6-7, 10-13a; Eph 5:8-14; Jn 9:1-41</b>
7:30am Mass for Barbara LaBaugh	Chapel
9:30am Mass for Jack Patrick	Chapel Courtyard
10:00am HS Confirmation Class	Zoom
11:30am Mass for John Godburn	Chapel Courtyard

## Prayers:

- ◆ **For those who died this week:** Leo Meyer, Millie Garcia
- ◆ **Please pray for those who have requested special intentions and prayers:**  
 Msgr. Anthony Janelli, Fr. John Schmoll, Daniel Padilla, Anna Trevino, Sandra Barrie, Deacon Joe Parugrug, Mark Lang, Nancy VanGalder, Tom Lucas, Kristal Lowe Limon, Nettie Shute, Sandy Keith, Meghan Vasquez, Jacob Blake, Dan Dungy, Isabel Wiggins, Rose Derby, Monica Becerra, Alice Schultz, Nancy Martin, Sr. Rosa Maria Branco FHIC

**Prayer Requests:** Please note that names for the sick / special intentions will remain in the bulletin for one month. If deceased, names are only published the week they died. If you have someone who is in need of prayers please contact the office at 436-3434 or go on our website and fill out the form under the "Prayer Request" tab.

# February Contributions

2020		2021	
Feb. 2	ACH \$21,504.01	Feb. 7	ACH \$20,593.06
Feb. 9	\$20,136.18	Feb. 14	\$9,225.50
Feb. 16	ACH \$18,198.51	Feb. 21	ACH \$11,165.27
Feb. 23	\$11,615.65	Feb. 28	\$12,199.66
<b>Feb. Total</b>	<b>\$71,454.35</b>	<b>Feb. Total</b>	<b>\$53,183.49</b>

## Weekend Masses

Saturday Mass is celebrated indoors at 5:00pm in the Chapel. **Sunday Masses are celebrated at 7:30am indoors in the Chapel** and at 9:30am and 11:30am outdoors in the Chapel Courtyard. Reservations are required to attend Mass. Reservations can be made online by visiting our website.

## Live Streaming

Sunday Mass is live streamed at 9:30am. Daily Masses are live streamed at 8:00am on Mondays and at 6:00pm on Tuesdays. All Masses are streamed on Facebook Live. Look for us under "St. Paul Catholic Newman Center".

## Office Closure

Our office is closed due to Covid-19 restrictions. Staff members are working remotely and checking emails and phone messages. If you need to drop anything off at the office, we now have a mailbox by the front door at the main building. We can be reached on our main line at 436-3434 or by email at [ncoffice@csufnewman.com](mailto:ncoffice@csufnewman.com).

### Follow us!



St. Paul Catholic Newman Center



[newmancenterfresno](#)

### College Pages

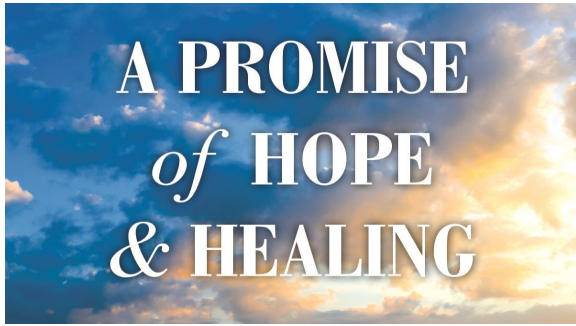


Newman Catholic Student Association (Fresno)



[newmancenter\\_fresno](#)





## A Promise of Hope and Healing

Although our campaign has ended, thank you to the generosity of our parishioners; we are still receiving new and additional pledges. We have received \$215,632.70 in pledges and have received 97% of that amount.

Electronic giving is the preferred, easy, safe and secure way to give to our parish. To schedule a recurring electronic gift directly from your bank account or credit card, please contact Carol at [carol@csufnewman.com](mailto:carol@csufnewman.com).

Please remember to make your payments accordingly. Thank you again for your generous support of St. Paul Catholic Newman Center!

## Weekly Justice Challenge

Justice Challenge: In the First Reading (Exodus 20:1-17) for this Sunday, we hear the story of God giving the Ten Commandments to the Israelites. Did you know that many, if not most, of the justice teachings in the Catechism of the Catholic Church are found in the section on the commandments, particularly commandment seven—you shall not steal? This is because the Seventh Commandment reminds us of how important it is to be other-centered and to respect their rights and property. Jesus' whole life was a witness to living for others. As disciples, we are called to follow Jesus' example. Your challenge this week is to choose one thing you can do each day which is totally other-centered, something which has no direct benefits for you. Do it not because it makes you feel good or makes you proud, but simply because it's what God is calling you to do.

## Daylight Savings Time

Daylight Savings Time begins next Sunday, March 14. Be sure to set your clocks FORWARD one hour ("spring forward"). Even better, set them before retiring on Saturday evening.



## Congratulations Rosemary Waters

Parishioner Rosemary Waters has been named a 2021 Top Dog Alumni Award recipient!



College of Science and Mathematics  
Rosemary Waters,  
B.A. 1966, M.A. '72

This year's event will be held virtually and will air on ABC 30 on Sunday, April 18 at 7:00pm. The event will also be livestreamed. More details are available at [fresnostatealumni.com](http://fresnostatealumni.com).

## Donations

You can make your donations to our parish through several portals. Sign up to make your donation to the Newman Center via electronic funds transfer (ACH), credit card, PayPal, or your banks online banking system. You can designate your donation to Sunday Contributions and / or special gifts automatically made weekly or monthly. One can also schedule reoccurring online donations. For more information send an email to Carol at [carol@csufnewman.com](mailto:carol@csufnewman.com). We appreciate your support!

## RCIA

### Interested in becoming Catholic?

If you have never been baptized or if you are baptized in another denomination but would like to become Catholic, please contact [ncoffice@csufnewman.com](mailto:ncoffice@csufnewman.com).



The RCIA process at the Newman Center is designed to be a safe and welcoming place to personally experience Christ and develop your personal relationship with Jesus in a supportive community. We don't throw a bunch of doctrines and rules at you. Instead we provide a place for you to explore and develop your faith journey with Jesus as a Catholic Christian.

If you are a baptized Catholic, spread the word and consider becoming a sponsor of those seeking Christ.

## Blood Donations Needed

The Central Valley blood supply is critically low. Consider donating if you can. The Central California Blood Center needs donors of all blood types. Donations will immediately help community members in need from all walks of life and ease the stressful burden of our front-line health care workers. Online scheduling is simple through their website where you can select an appointment location, date and time that fits your schedule.

<https://www.donateblood.org/> or call (559)389-5433.

## Reasoning Won't Work

*This Week's Readings at Mass*

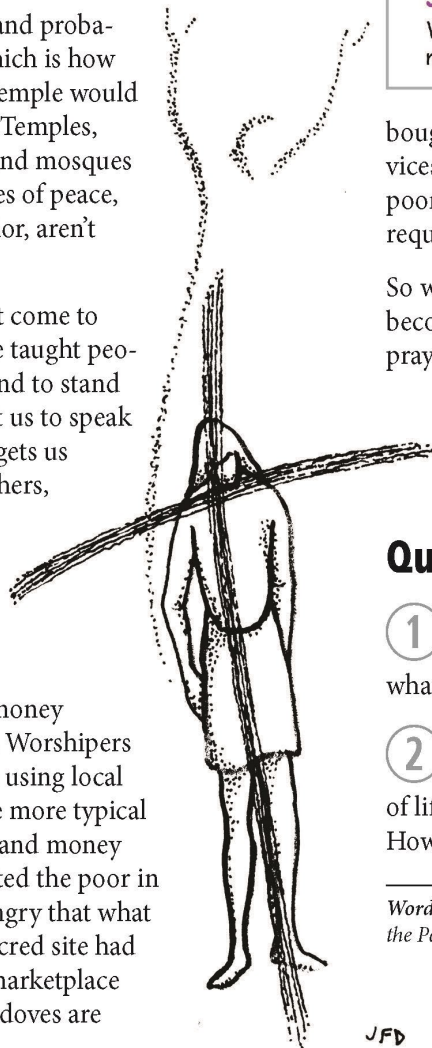
- ▶ Exodus 20:1-17 - The Ten Commandments
- ▶ 1 Corinthians 1:22-25 - The wisdom and folly of the cross
- ▶ John 2:13-25 - Cleansing of the temple

Imagine a man entering your church in a rage and waving a weapon to chase all the ushers, altar servers, Eucharistic ministers, and priests out of the building. Picture that person flipping over the tables displaying fliers about the upcoming Crab Feed and Bingo nights. Finally, imagine him violently throwing the collection baskets and their contents across the floor while he shouts that his father's house is being dishonored.

It would be a shocking and probably terrifying scene—which is how Jesus' cleansing of the Temple would have been experienced. Temples, synagogues, churches, and mosques are supposed to be places of peace, prayer, and good behavior, aren't they?

The thing is, Jesus didn't come to teach good behavior. He taught people to do what is right and to stand up for justice. He taught us to speak the truth, even when it gets us in trouble with our teachers, employers, parents, or religious leaders. That is exactly what he does in the gospel reading today.

Jesus is furious to find money changers in the Temple. Worshipers had to pay a Temple tax using local Jewish currency, not the more typical Roman or Greek coins, and money changers regularly cheated the poor in the exchange. Jesus is angry that what was supposed to be a sacred site had become a commercial marketplace where sheep, oxen, and doves are



LOOK WHO'S TALKING! HOW ABOUT THE WAY YOU GAVE THEM TO MOSES?

Bernice, just PRESENT the Ten Commandments to your friends - you don't have to beat them over the head with them!

What do you mean?

STONE TABLETS!

So??

KINDA HARD TO SWALLOW, DON'T YOU THINK??

© Jean Denton flock.pastoralcenter.com

"The foolishness of God is wiser than human wisdom."

**Sheepish Question:**  
Which of God's commandments are hardest for me to swallow...uh...follow?

bought and sold for sacrifice. It was a "pay for services" model which led to even greater abuse of the poor who couldn't always afford to offer the sacrifices required of them in order to be declared "clean."

So when Jesus enters the Temple and sees how it has become a commercial venture as much as a place of prayer, he reacts instantly with actions that cannot be ignored. If he had tried to reason with the leaders, he could have been disregarded, so instead he makes his point in a way that can't be forgotten.

## Questions of the Week

- 1 What would you think or how would you react if someone came into your church and did what Jesus did in the Temple?
- 2 Are there ways in which your parish has strayed from its mission of preaching Jesus' way of life? Has it become a "marketplace" in any respect? How so?

*Word of the Week* • Copyright © 2020 Ann Naffziger. Published by the Pastoral Center / PastoralCenter.com. All rights reserved.



# Interfaith Scholar Weekend 2021 Webinar Series

## "Bearing Witness from Fresno's Mason-Dixon Line"



Dr. Andrew Fiala



Dr. Malik Simba



Dr. Nathan K. Hensley



Uziel Jimenez

Join us for six interfaith conversations every Monday beginning February 15, as we consider what it means to "Bear Witness" to Fresno's history of racism and redlining.

### PART I: Opening Panel: February 15, 4-5:30 pm

Three guest scholars will share their important contributions to the study of racism and redlining in Fresno.

- Moderated by **Dr. Andrew Fiala**
- Guest Scholars
  - **Dr. Malik Simba**, Fresno State University
  - **Dr. Nathan K. Hensley**, Georgetown University
  - **Uziel Jimenez**, Antiracist Educator, Co-founder Fresno Ethnic Studies Coalition

### PART II: Book Study: 60-minute sessions

Four interfaith speakers and their respondents will dive into Eddie S. Glaude Jr.'s best-book. Find out more on the next page.

### PART III: Closing Roundtable: March 22, 4-5:30 pm

Three guest scholars and four interfaith speakers return for a powerful discussion on lessons learned and the urgent questions to call forth a new America in our communities.

- Moderated by **Jim Grant**, MA, Chair for ISW

To RSVP and for more information, learn more at

[bit.ly/ISW\\_rsvp21](https://bit.ly/ISW_rsvp21)



Temple Beth Israel  
of Fresno, California



Fresno City College



# PART II: Book Study

## " Bearing Witness with James Baldwin"

Representatives from four faith traditions and respondents take a deep dive into Eddie S. Glaude Jr.'s best-selling book, *Begin Again: James Baldwin's America and Its Urgent Lessons for Our Own*.  
**Make sure to RSVP today at [bit.ly/ISW\\_rsvp](https://bit.ly/ISW_rsvp).**

*\*All plenary sessions are FREE and will be recorded. You do not need to be present to participate.*

### Week 1: February 22, 4-5 pm

"Introduction," Chapter 1: "The Lie," and "Conclusion"



Christian Faith  
Rev. Dr. Paul Binion  
Pastor of Westside  
Church of God, Fresno

Moderated by Ashlie M. Kosinski, Co-founder  
The Wildflower Collective, Information Coordinator, ISW

#### Respondents

- **Rev. Anna Lopez**, New Thought Community, Fresno, indigenous cosmology and modern spirituality perspective
- **Daniel O'Connell**, PhD, Executive Director, Central Valley Partnership, Quaker-Buddhist perspective

### Week 2: March 1, 4-5 pm

Chapter 2: "Witness" and  
Chapter 3: "The Dangerous Road"



Reform Jewish Faith  
Rabbi Dr. Laura Novak Winer  
Hebrew Union College  
Jewish Institute of Religion

Moderated by Gaonoucci Belle Vang

#### Respondents

- **Sukaina Hussain**, Deputy Executive Director for CAIR Sacramento/Central Valley, Islamic perspective
- **Lady Jessica Criner**, St. Rest Baptist Church, Fresno, Christian perspective

### Week 3: March 8, 4-5 pm

Chapter 4: "The Reckoning" and  
Chapter 5: "Elsewhere"



Muslim Faith  
Hajj Reza Nekumanesh  
Executive Director, Islamic  
Cultural Center of Fresno

Moderated by Mariah Cushing, M.A.,  
Fresno Pacific Biblical Seminary

#### Respondents

- **Rabbi Rick Winer**, Temple Beth Israel, Fresno, Reform Jewish perspective
- **Sister Kathleen Drilling**, SSND, St. Paul Catholic Newman Center, Director of Religious Education, Roman Catholic perspective

### Week 4: March 15, 4-5 pm

Chapter 6: "Ruins" and Chapter 7 "Begin Again"



Hindu Faith  
Dr. Veena Howard  
Professor of Asian Religions,  
Coordinator, Peace and  
Conflict Studies  
Fresno State University

Moderated by Zena Chafi,  
Community Organizer for CAIR Fresno/Merced

#### Respondents

- **Darren Duerksen**, PhD, Associate Professor of Intercultural and Religious Studies, Fresno Pacific University, Evangelical-Anabaptist Christian perspective
- **Rev. Akiko Miyake-Stoner**, Senior Pastor United Japanese Christian Church, Clovis, United Methodist Christian perspective



# Whitehurst

Sullivan, Burns & Blair Funeral Home  
Often Imitated . . . Never Duplicated!  
Catholic Funeral Directors Since 1929  
Donald E. Cardell FD1185 Manager  
David Adame, Family Service Counselor Lic #OI68588  
Servando Tovar FD1032 • Eric Charlson, Funeral Arranger  
1525 East Saginaw Way 559.227.4048  
www.whitehurstsullivan.com Lic. #FD1146

## ELECTRIC MOTOR SHOP

(559) 650-1153  
ELECTRICAL WIRING & SUPPLIES  
MOTORS SOLD, REPAIRED & REWOUND  
253 Fulton Street, Fresno CA

## DALENA / BENIK & ASSOCIATES

INSURANCE SERVICE INC.  
For All Your Insurance Needs  
6740 N. West Ave. # 108, Fresno  
(559) 448-9580

Suzanne Spradling  
(559) 978-4854  
Spradling Educational Consulting  
College & Career Planning  
suzanne@spradlingec.com

Contractors Lic. No. 894856  
**SIERRA**  
SINCE 1970 Aluminum Products, Inc.  
PATIO COVERS • SUN ROOMS  
SCREENS RAIN GUTTERS  
COMMERCIAL AND RESIDENTIAL  
3317 N. Marks Ave. Fresno CA 93722  
(559) 248-9404 **JOE BREMER**

*The Flavor Tree*  
FRUIT COMPANY, LLC  
Maurice Cameron  
Parishioner

**MICHAEL J. MADRIGAL, D.D.S.**  
FAMILY DENTISTRY  
3106 Willow  
Suite #105 - Clovis  
For Appts: 292-6203

Lisa Marsella Purtell, CFP®  
Senior Vice President  
Wealth Management, Wealth Advisor  
Certified Investment Management Analyst™  
**Morgan Stanley**  
559.431.5900  
lisa.marsella@morganstanley.com  
5250 N. Palm Avenue Suite 321, Fresno

**WARNORS**  
Cultural Arts District  
Book your next event with us!  
**Star Palace | Frank's Place**  
559.264.2848  
1412 Fulton St. Fresno

AUDITS • APPEALS • PAST DUE RETURNS  
**TAX TROUBLE? WE WILL HELP!**  
Tuttle & Tuttle CPA 291-5527  
www.taxhelpfresno.com Deborah Tuttle CPA, Parishioner  
INSTALLMENT PLANS • LEVY RELEASES

"For God so loved the world that He gave His One and only Son, that whoever believes in Him shall not perish but have eternal life." John 3:16

**STEPHENS & BEAN**  
CHapel  
Est. 1885 - FD#11  
- Everything In One Place -  
Serving all Faiths / Funeral Services  
Traditional • Cremation • Pre-Need Plans  
Jason L. Obenauf, Manager FD#1392  
Se Habla Español  
202 N. Teilman, Fresno (South of Belmont) (559) 268-9292

**FORD FINANCIAL GROUP**  
Retirement Planning  
Brian J. Ullmann  
Certified Financial Planner™  
(559) 449-8690  
www.FordFG.com  
Brian Ullmann is a Registered Representative with and securities are offered through LPL Financial, Member FINRA/SIPC.

**TACOS Marquitos**  
Anojitos Mexicanos  
Open Everyday  
Join us after Mass!  
559.447.5569  
10% OFF  
Pre-tax total meal • Exp 6-30-20  
One coupon per visit  
Walking distance from St. Paul's  
**IN BULLDOG PLAZA**  
1772 E. Barstow • Fresno

**Jay Chapel** LIC. #FD385  
FUNERAL DIRECTORS  
Serving Since 1893  
Wayne A. Gomes, Mgr. FDR# 171  
S. Brian Sisson  
Managing Partner, FD #4143  
(Member St. Paul Newman Center)  
1121 Roberts Ave, Madera, CA 93637  
(559) 432 - 8814  
www.JayChapel.com  
Catholic Funeral Directors

Patrick **MAZZEI** DDS  
Patient-first care that revolves around you  
**Family Dentistry Preventative Cosmetic**  
Accepting New Patients  
Call 432-6474  
6335 N. Fresno St. @ Sierra  
patrickmazzidds.com

**Saint Agnes Medical Center**  
(559) 450-3000  
www.samc.com

**WESTMONT® Cottonwood Court**  
Assisted Living & Memory Care  
COMPLIMENTARY LUNCH & TOUR WITH THIS BULLETIN  
(559) 446-1266  
CottonwoodFresno.com

**Your Home SOLD Guaranteed**  
Kristen McIntosh  
Broker Associate  
DRE#1423023  
Cell 559.419.0333  
www.kristenmcintosh.com  
Kmcintosh@londonproperties.com

**STERLING & SMITH FUNERAL DIRECTORS, INC.**  
Locally Owned Catholic Family Funeral Home!  
Tony Smith (SJM 82) FDR 2945  
Ronald Smith (SJM 86) FDR 2773  
Tony Carlos (SJM 86)  
We offer the highest quality services at affordable prices!  
10% Discount on Advanced Planning  
1103 'E' Street, Fresno (559) 266-9711  
www.sterlingandsmithfd.com FD1836  
Sterling & Smith Funeral Home  
Funeral & Cremation Services for  
Fresno, CA - Tulare, CA - Dinuba, CA - Residents

4589 N. Marty Ave. Suite 101 Fresno  
**CHARTER WINDOW**  
35 Years  
**Lauri & Patrick Redell**  
Vinyl Replacement Windows & Patio Doors  
Custom Made for Your Home  
(559) 275.3861 Office • (559) 250.3481 Mobile

**LONDON PROPERTIES**  
2019 FIVE STAR  
Quality Service Integrity & Experience Professionalism  
Morgan Valley Residence  
Luxury Assisted Living in Fresno  
Including Memory, Respite, Palliative & Hospice Care  
Live Freely, Live Fully  
(559) 907-3667

**DIOCESE OF FRESNO CATHOLIC CEMETERIES**  
St. Peter's • Holy Cross • Calvary  
Mausoleums • Traditional Ground Burials  
Niches for Cremation  
Competitive Prices  
Affordable Pre-Need Financing Available  
264 N. Blythe Avenue, Fresno  
(559) 488-7449 Se Habla Español  
www.DioceseofFresno.org/cemeteries

Space is available  
Call 559.930.9116  
Email chasepublications@outlook.com

**Bella Pasta**  
Italian Restaurant  
Palm & Herndon (559) 325-5525  
Lunch • Dinner • Take-out  
Catering • Banquets

**COUNTRY WAFFLES**  
BREAKFAST • LUNCH  
**\$2.00 OFF**  
One Breakfast or Lunch and Beverage  
OR  
**\$1.00 OFF**  
Senior Menu and Specials  
WITH THIS COUPON THRU JUNE 30, 2020  
NOT GOOD WITH ANY OTHER COUPON OR TAKE OUTS  
**Cedar at Herndon**